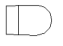






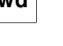











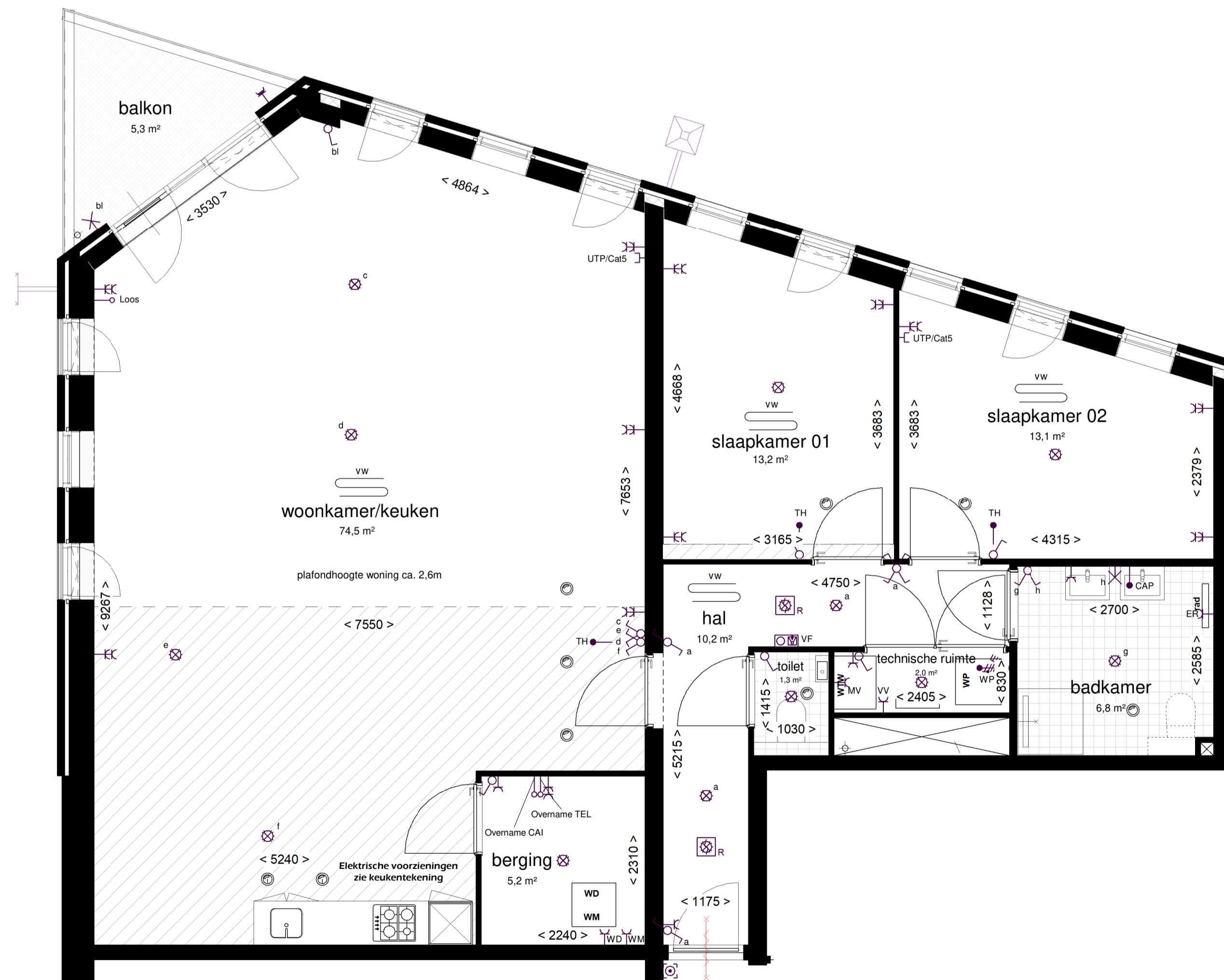
-  toilet (gestippeld optioneel)
-  wastafel
-  douche met vloergoot
-  wtw warmteterugwinunit
-  wp warmtepomp
-  wm optioneel extra boilerwat
-  wm wasmachine aansluiting
-  wd wasdroger aansluiting
-  rad elektrische handdoekradiator
-  vw verdeler vloerverwarming
-  vloerverwarming
-  ventilatieventiel (in plafond)
-  schacht
-  entree woning
-  deur, brandwerend en zelfsluitend
-  deur
-  draaikiepraam
-  tegelwerk
-  gekrijstreepte oppervlakte



1:200
gevelaanzicht Noord

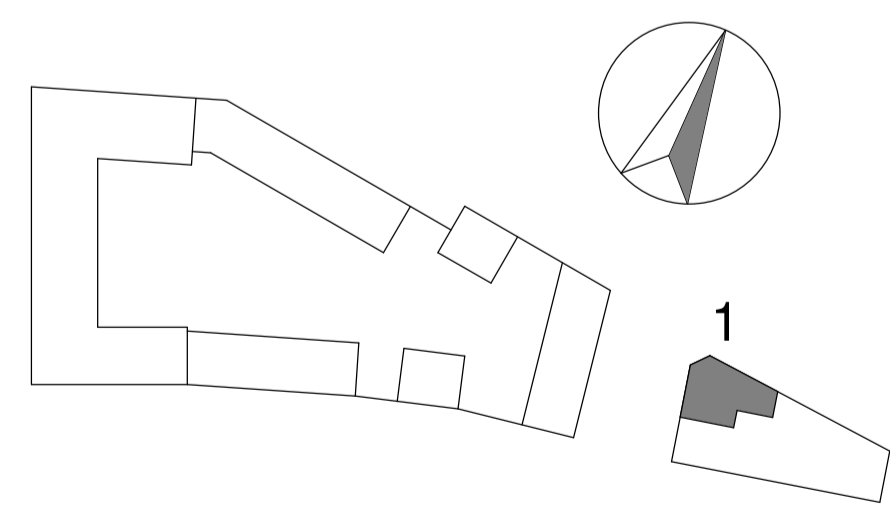


1:200
gevelaanzicht West



1:50
PLATTEGROND

Renaud (Elektrische installatie Woningen)	
	Conducties
	Aansluitpunt voor wand Armatuur
	Aansluitpunt tect wandarmatuur
	Elektrische schakelaar
	Elektrische schakelaar / tect combinatie
	Wand schakelaar
	Deck schakelaar
	Elektrische wandcontactdoos (overlappend)
	Elektrische wandcontactdoos (niet overlappend)
	Elektrische wandcontactdoos (niet overlappend)
	Elektrische wandcontactdoos (niet overlappend)
	Elektrische wandcontactdoos (niet overlappend)
	Zwaartekracht aansluiting 1.5 x 1.5p. Data of CAI
	Zwaartekracht aansluiting 1.5 x 1.5p. Data of CAI
	Loos binding (aan metaal)
	Handhaving loosbinding
	230V aansluiting
	Groupenkast
	Rekeningkast
	Wandkast 230V (opgevoerd)
	Wandkast 230V (opgevoerd)
	Wandkast met wandcontactdoos 1.5 x 1.5p. aansluiting aansluiting
	Wandkast met wandcontactdoos 1.5 x 1.5p. aansluiting aansluiting
	Wandkast met wandcontactdoos 1.5 x 1.5p. aansluiting aansluiting



EERSTE VERDIEPING

SPUIFRONT
OUD-BEIJERLAND



bouwnummer 01: onderdeel
22-06-2021: datum
1:50 - 1:200: schaal
4055: projectnummer