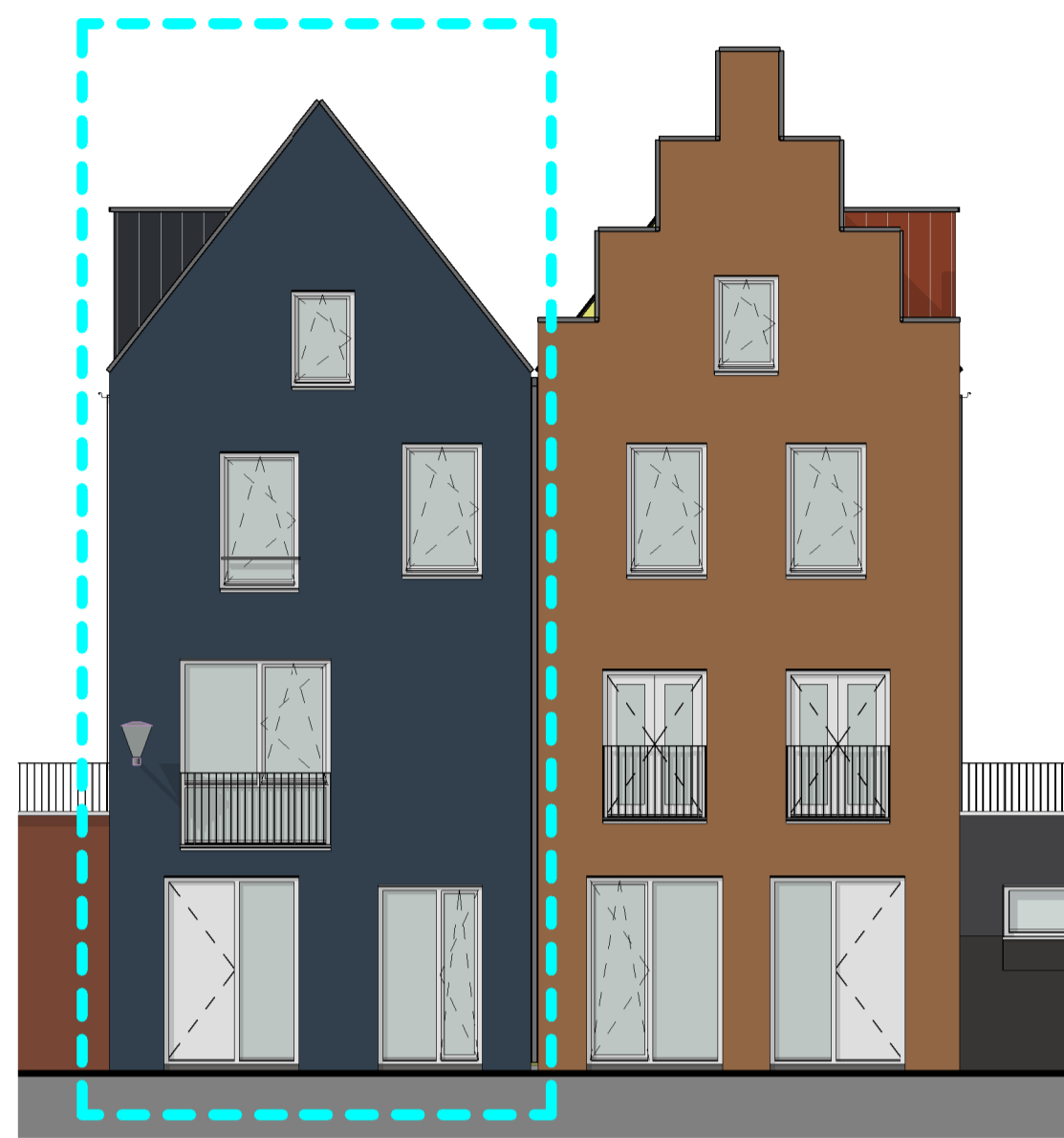


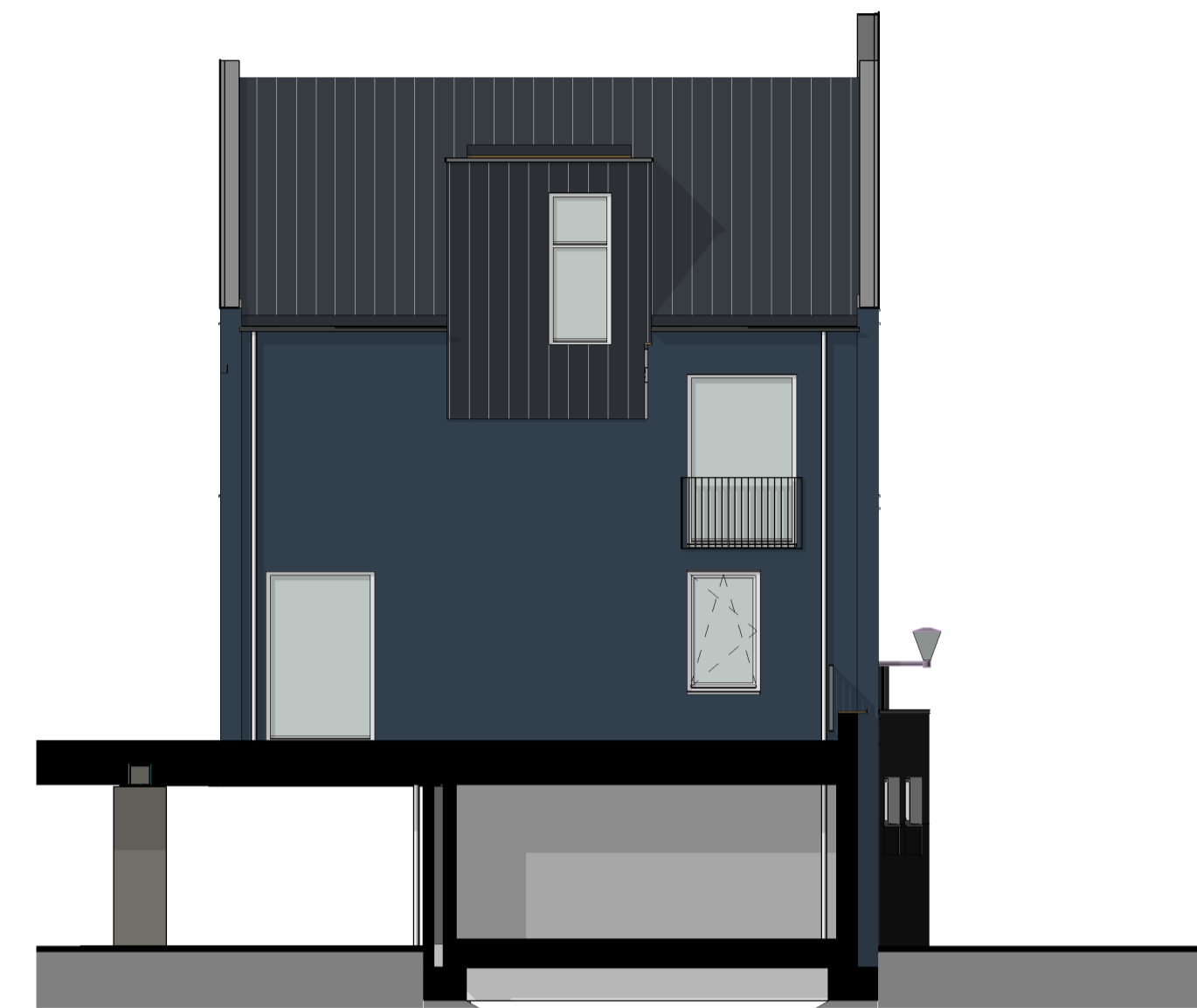
-  toilet (gestippeld optioneel)
-  wastafel
-  douche met vloergoot
-  wtw warmteterugwinunit
-  wp warmtepomp
-  optioneel extra boiler vat
-  wm wasmachine aansluiting
-  wd wasdroger aansluiting
-  rad elektrische handdoekradiator
-  vv verdeler vloerverwarming
-  vloerverwarming
-  ventilatieventiel (in plafond)
-  schacht
-  entree woning
-  deur, brandwerend en zelfsluitend
-  deur
-  draaikiepraam
-  tegelwerk
-  gekrijstreepte oppervlakte



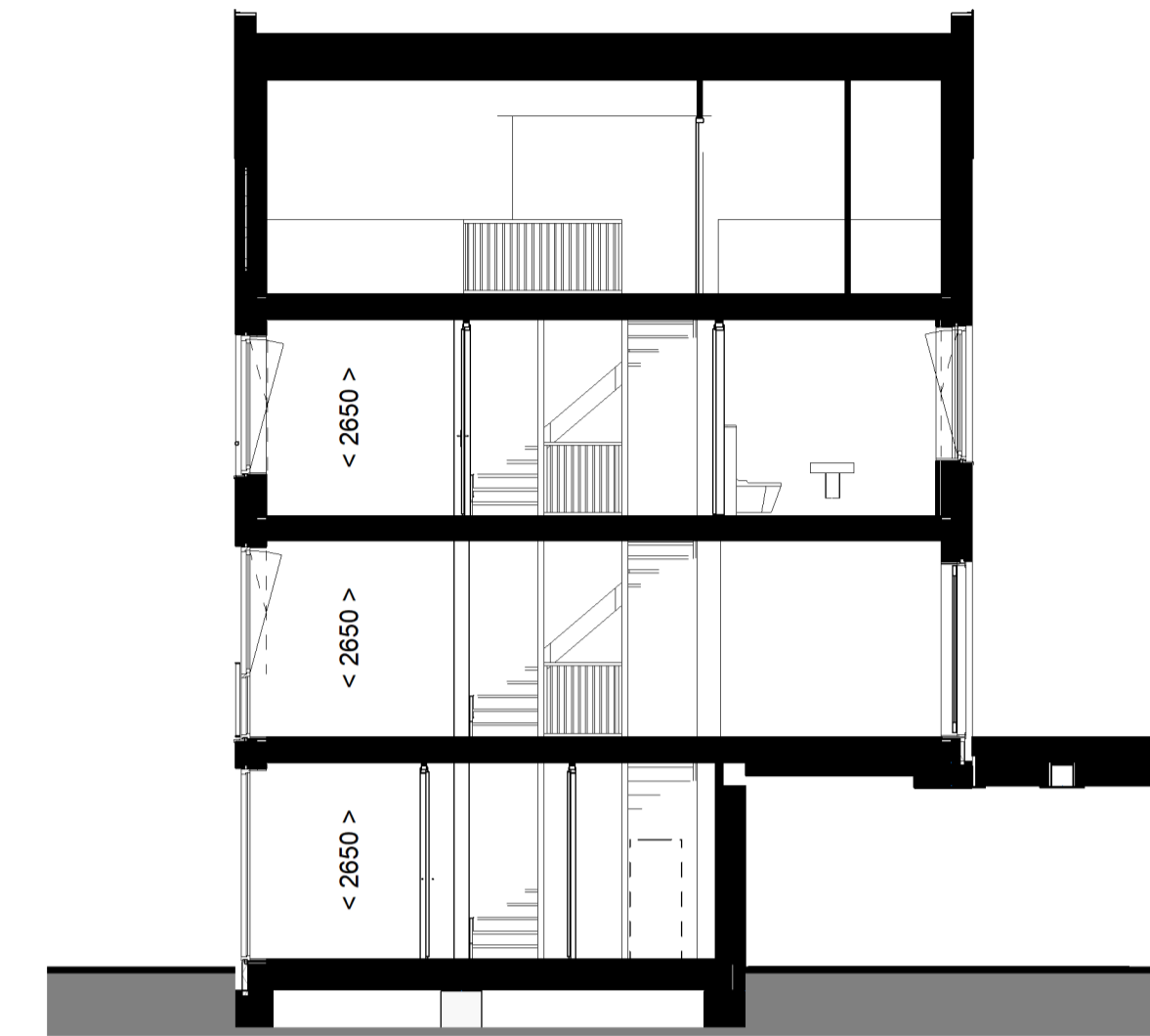
1:100 VOORGEVEL (ZUID)



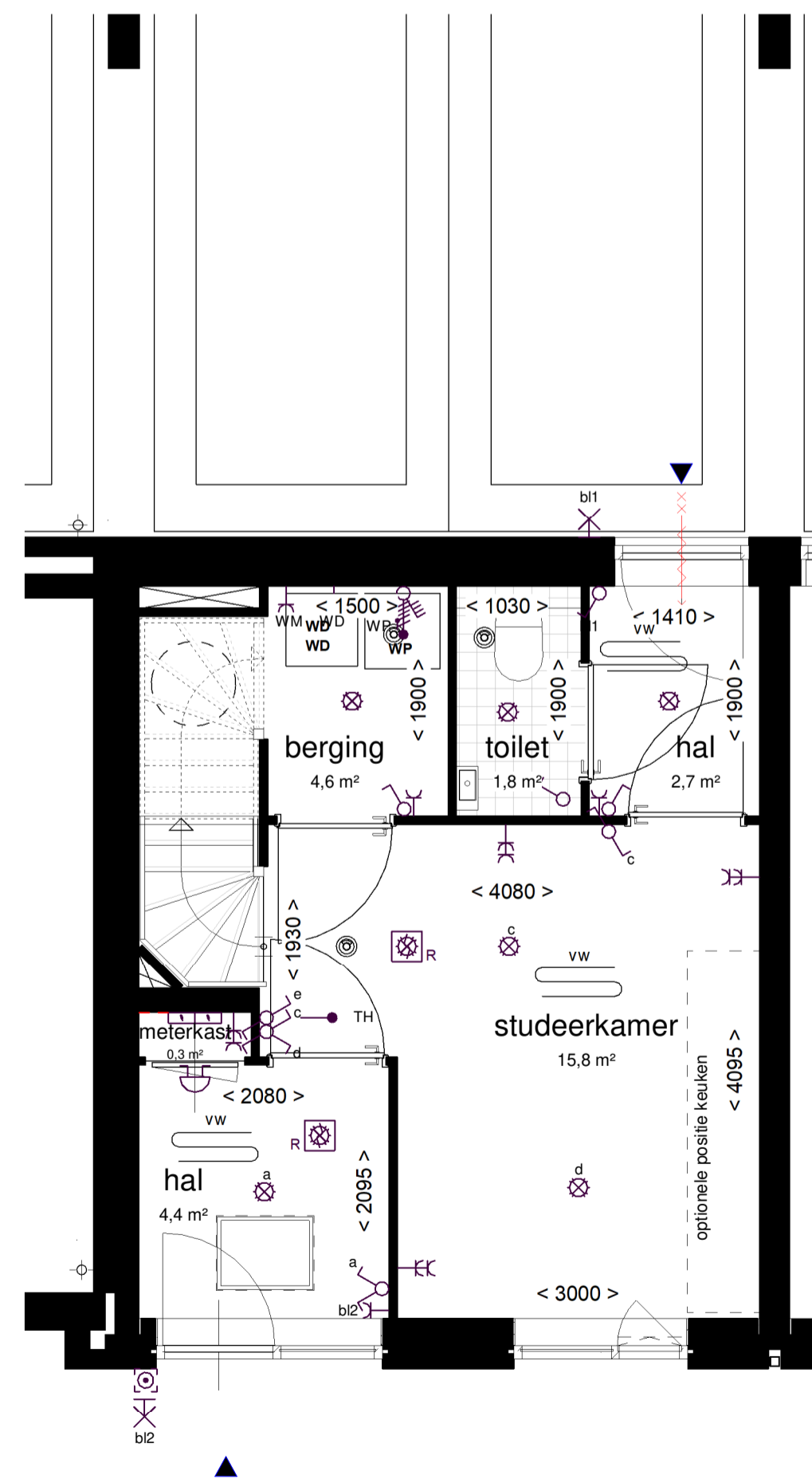
1:100 ACHTERGEVEL (NOORD)



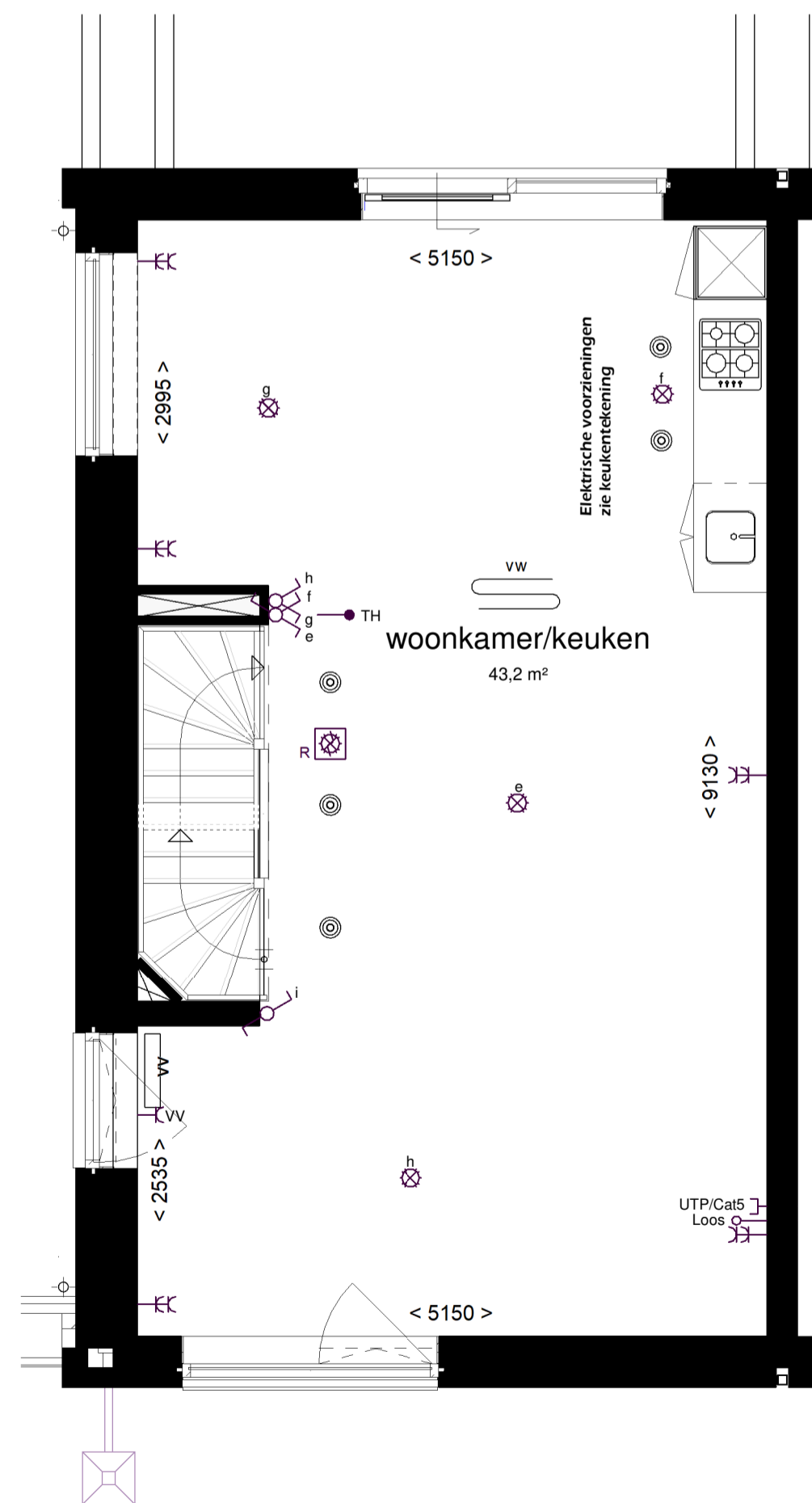
1:100 ZIJGEVEL (WEST)



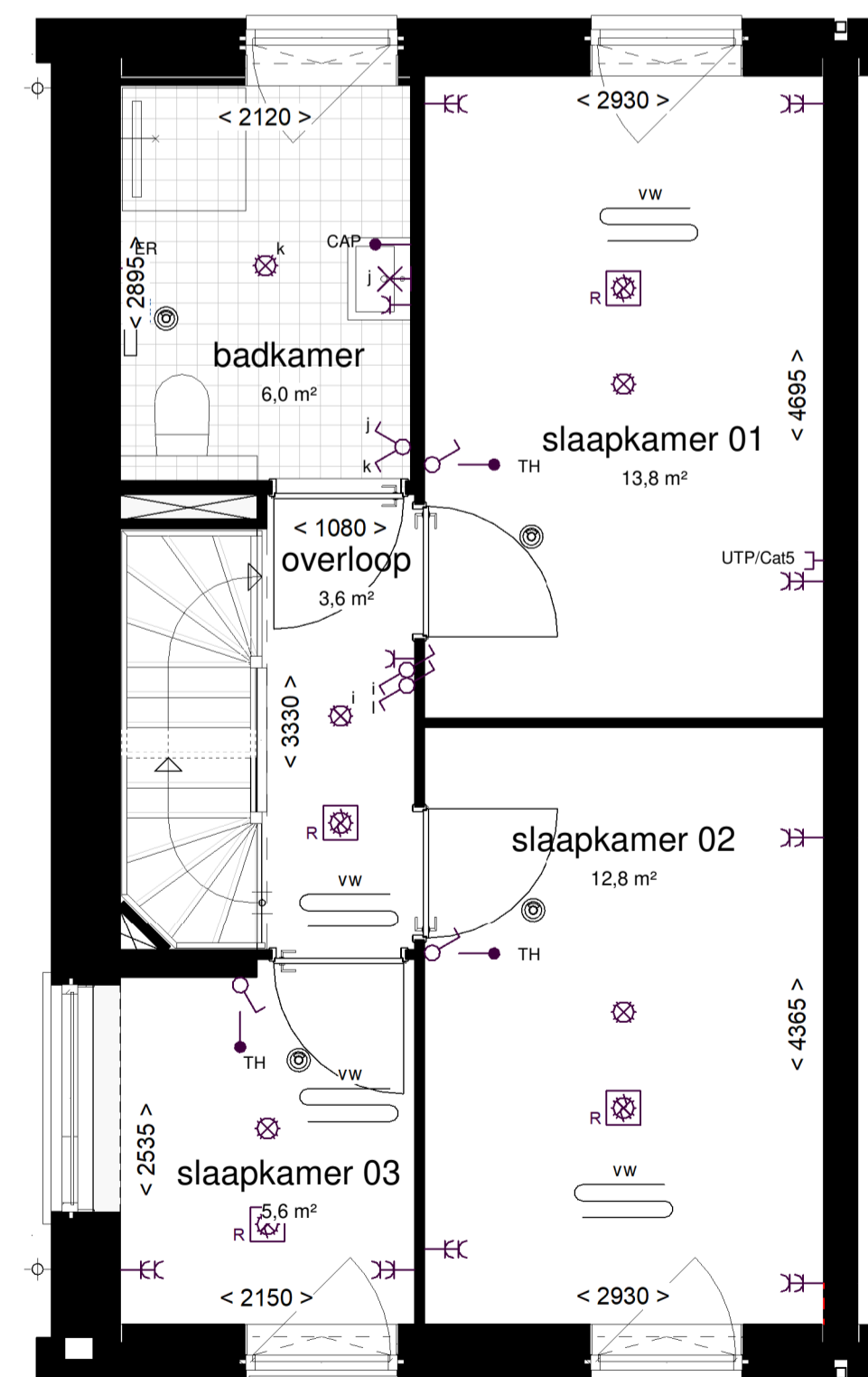
1:100 DOORSNEDE



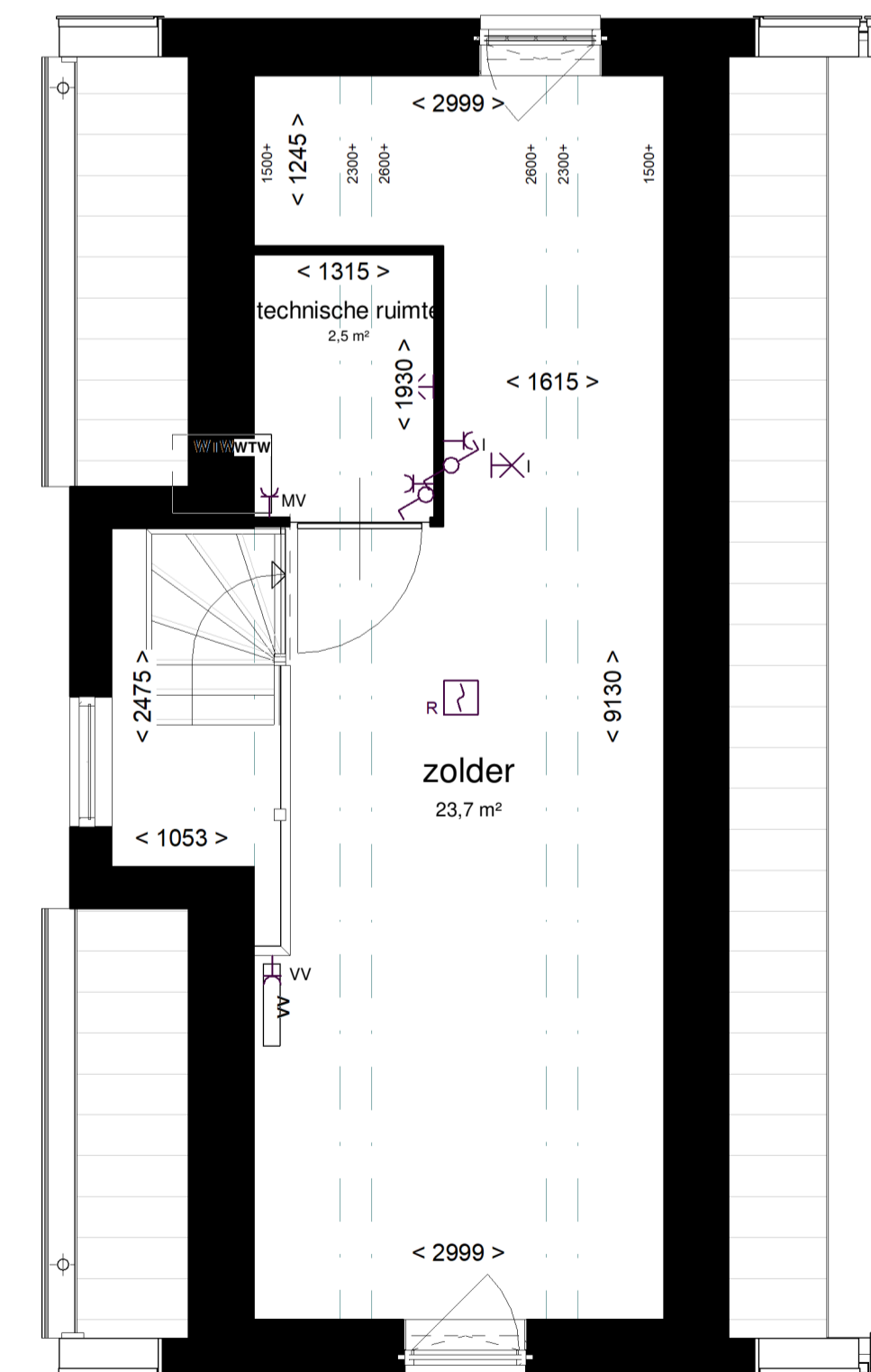
1:50 BEGANE GROND




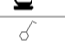
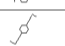
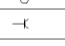
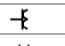
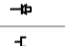


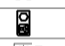


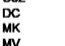





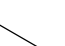

1:50 1e VERDIEPING



1:50 2e VERDIEPING



1:50 3e VERDIEPING

Rennov (Slechts te installeren)	
	toilet
	wastafel
	douche met vloergoot
	wtw warmteterugwinunit
	wp warmtepomp
	optioneel extra boiler vat
	wm wasmachine aansluiting
	wd wasdroger aansluiting
	rad elektrische handdoekradiator
	vv verdeler vloerverwarming
	vloerverwarming
	ventilatieventiel (in plafond)
	schacht
	entree woning
	deur, brandwerend en zelfsluitend
	deur
	draaikiepraam
	tegelwerk
	gekrijstreepte oppervlakte

