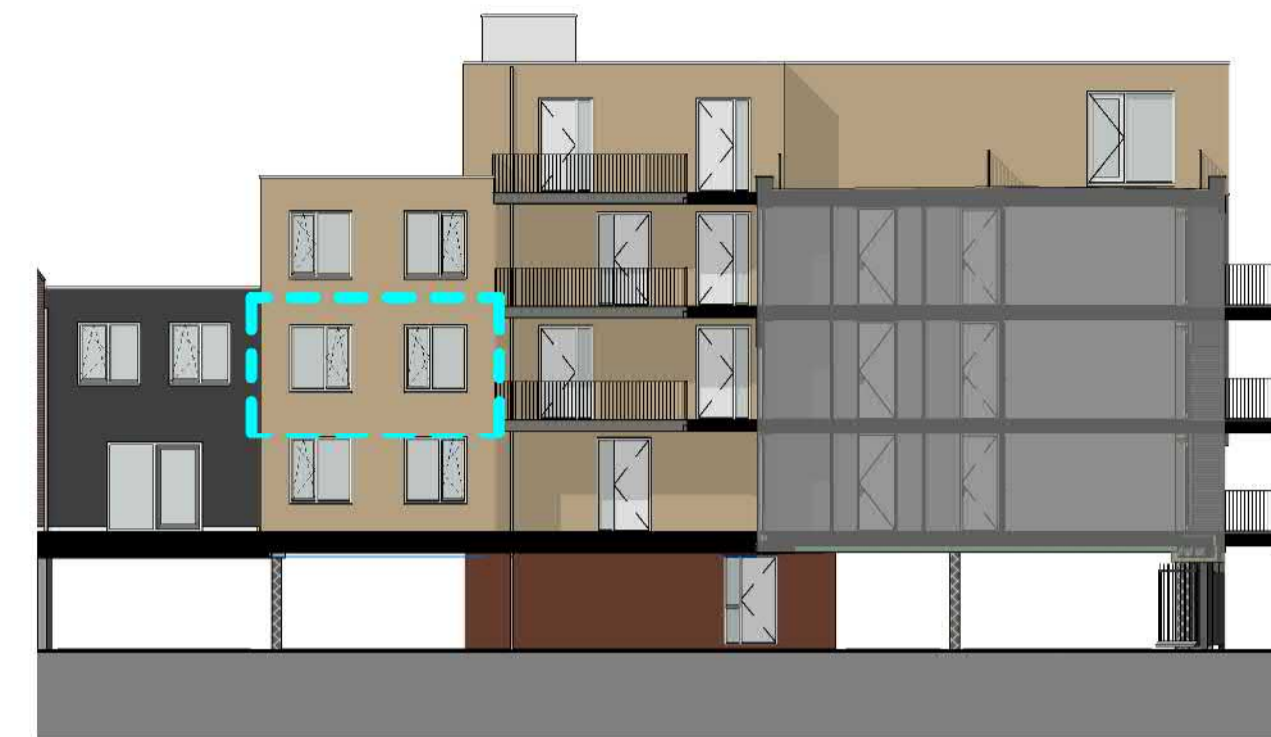


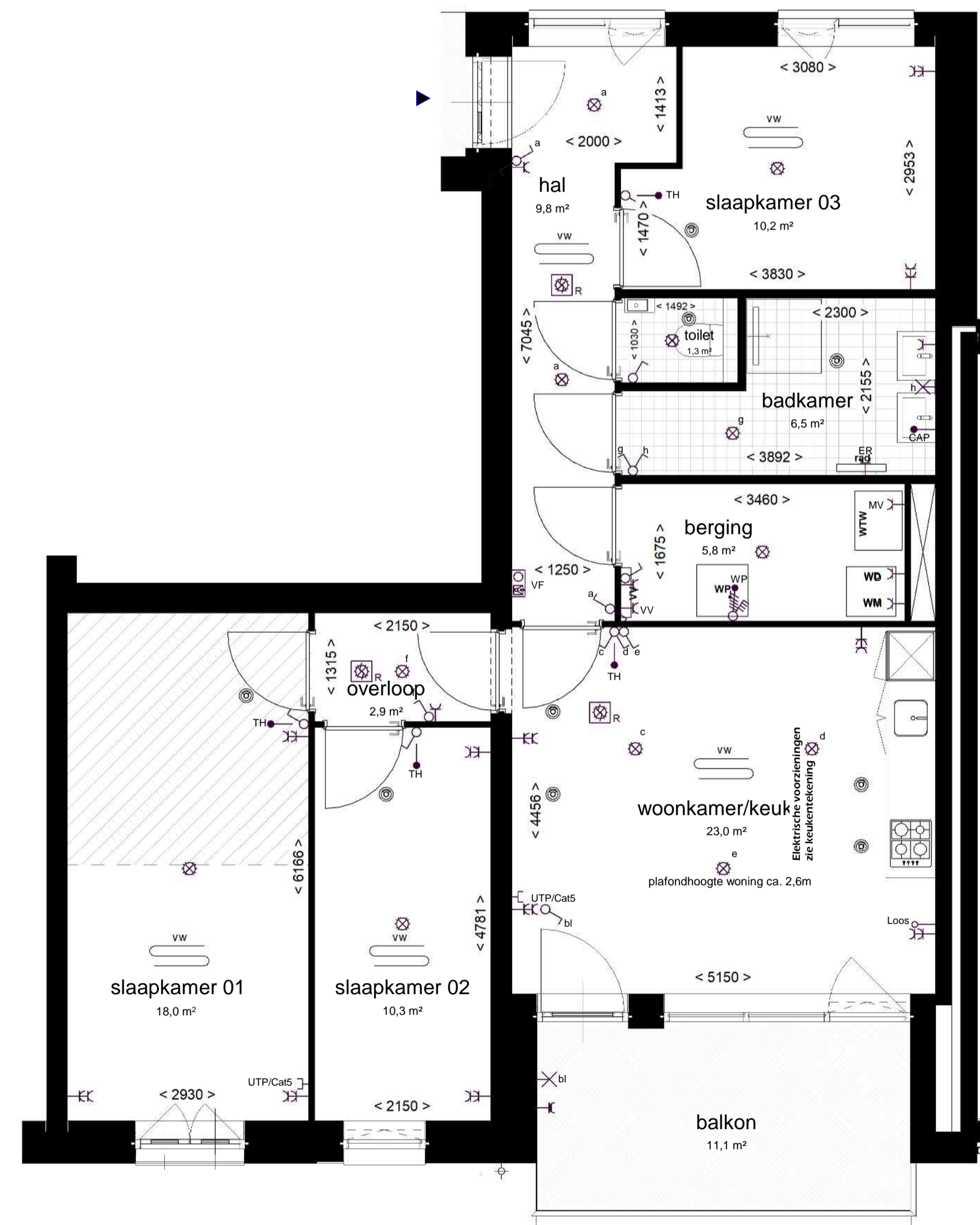
-  toilet (gestippeld optioneel)
-  wastafel
-  douche met vloergoot
-  wtw warmteterugwinunit
-  wp warmtepomp
-  optioneel extra boiler vat
-  wmi wasmachine aansluiting
-  wd wasdroger aansluiting
-  rad elektrische handdoekradiator
-  vv verdeeler vloerverwarming
-  vloerverwarming
-  ventilatieventiel (in plafond)
-  schacht
-  entree woning
-  deur, brandwerend en zelfsluitend
-  deur
-  draaikiepraam
-  tegelwerk
-  geknijpstreepte oppervlakte








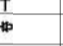

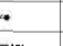

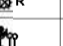









1:200
VOORGEVEL (ZUID)

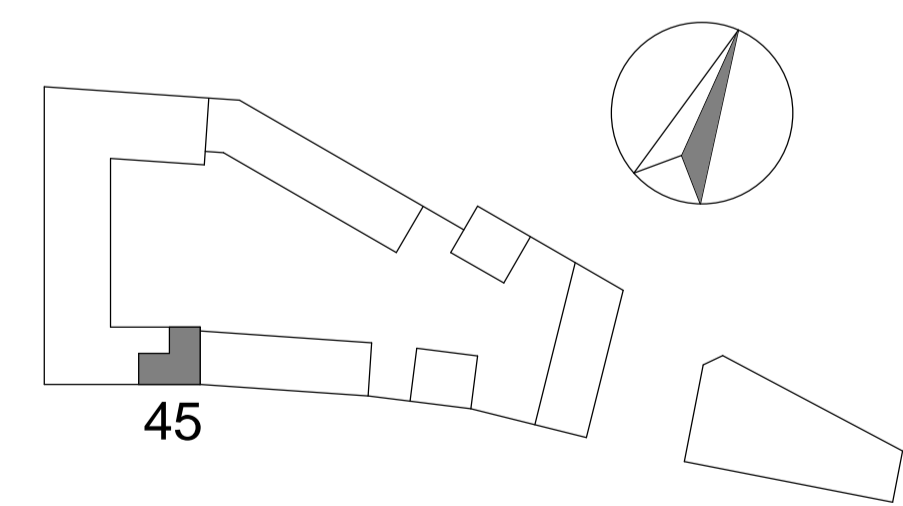


1:200
ACHTERGEVEL (NOORD)



1:50
PLATTEGROND

Renvooi (Elektrische installatie Woningen)	
	toilet
	wastafel
	douche met vloergoot
	warmteterugwinunit
	warmtepomp
	optioneel extra boiler vat
	wasmachine aansluiting
	wasdroger aansluiting
	elektrische handdoekradiator
	verdeeler vloerverwarming
	vloerverwarming
	ventilatieventiel (in plafond)
	schacht
	entree woning
	deur, brandwerend en zelfsluitend
	deur
	draaikiepraam
	tegelwerk
	geknijpstreepte oppervlakte



45
TWEDE VERDIEPING

SPUIFRONT
OUD-BEIJERLAND



bouwnummer 45 onderdeel
22-06-2021 datum
1:50 - 1:200 schaal
4055 projectnummer