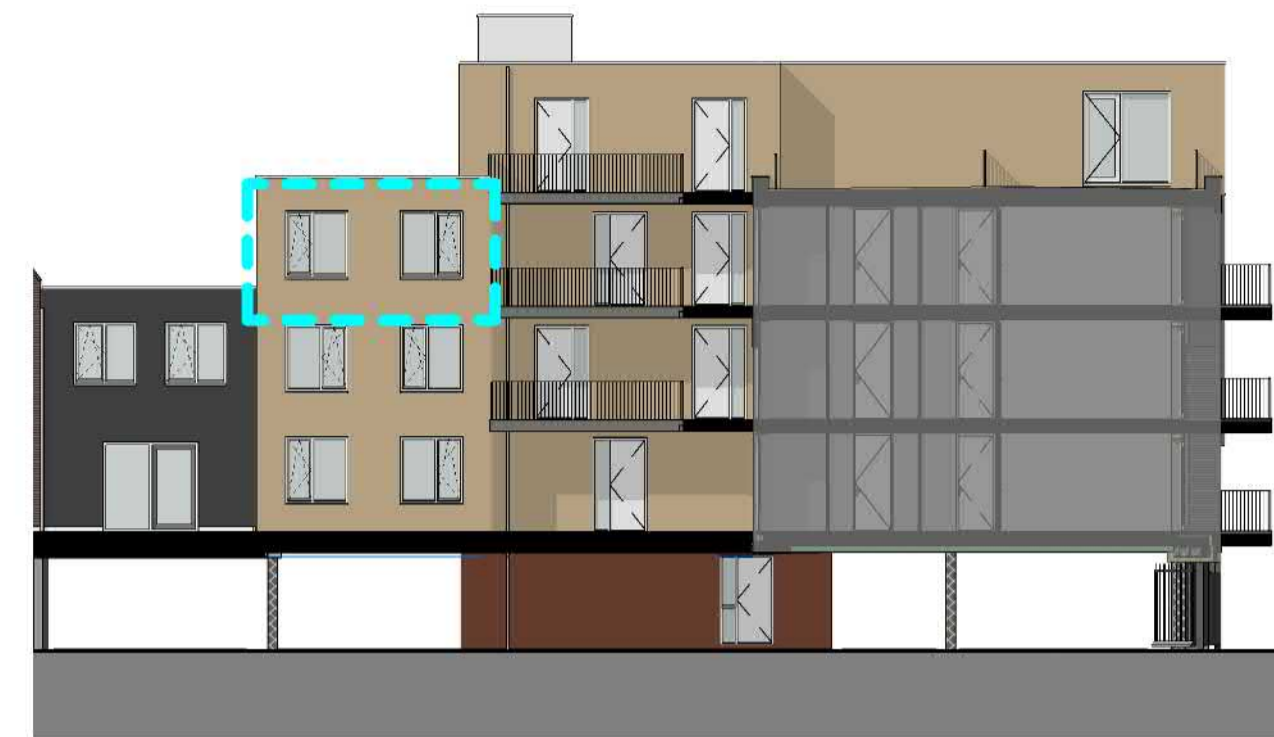


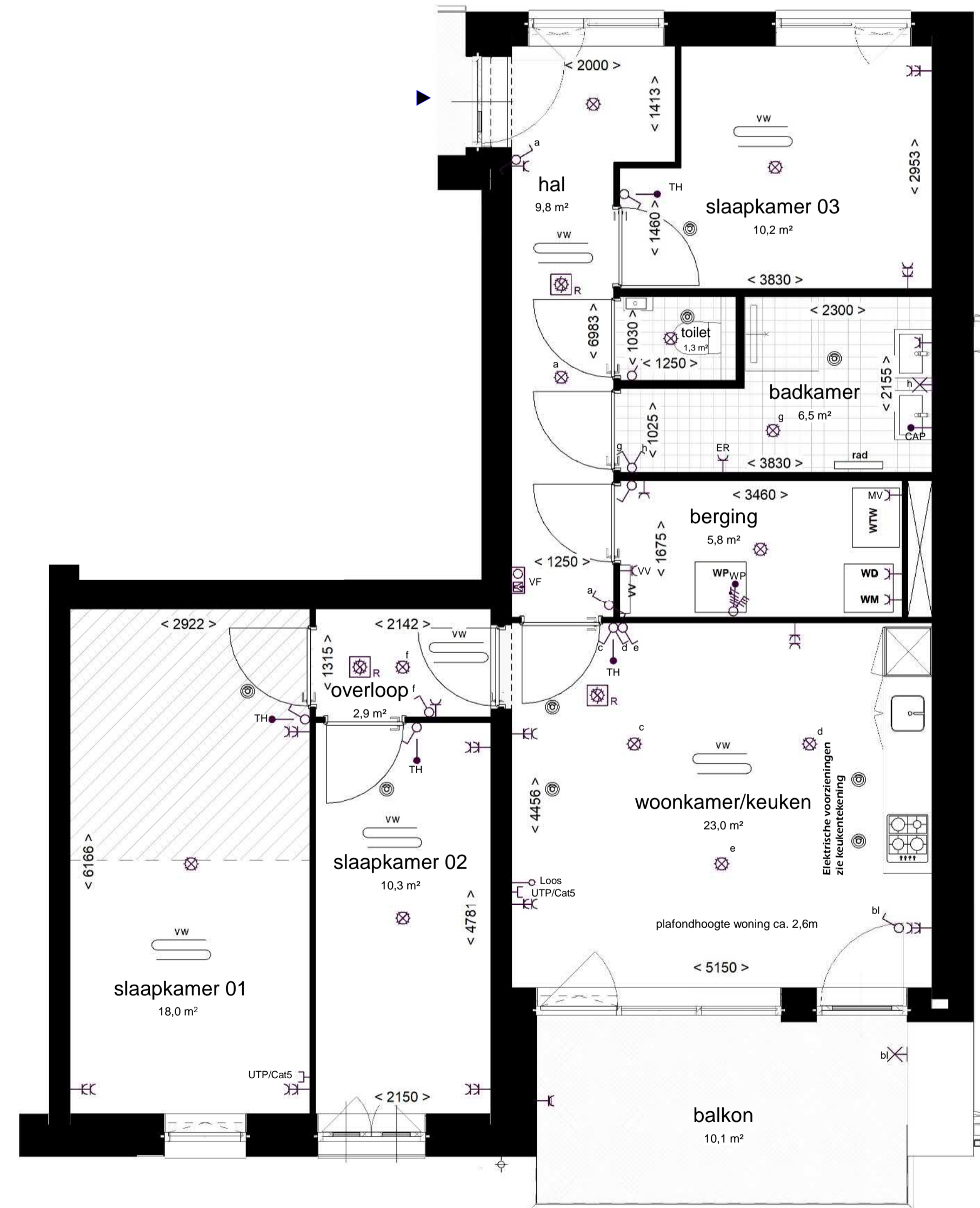
-  toilet (gestippeld optioneel)
-  wastafel
-  douche met vloergoot
-  wtw warmteterugwinunit
-  wp warmtepomp
-  wm optioneel extra boilervat
-  wasmachine aansluiting
-  wasdroger aansluiting
-  elektrische handdoekradiator
-  verdeeler vloerverwarming
-  vloerverwarming
-  ventilatieventiel (in plafond)
-  schacht
-  entree woning
-  deur, brandwerend en zelfsluitend
-  deur
-  draaikiepraam
-  tegelwerk
-  geknijpstreepte oppervlakte








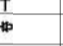

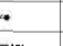

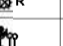









1 : 200  
VOORGEVEL (ZUID)

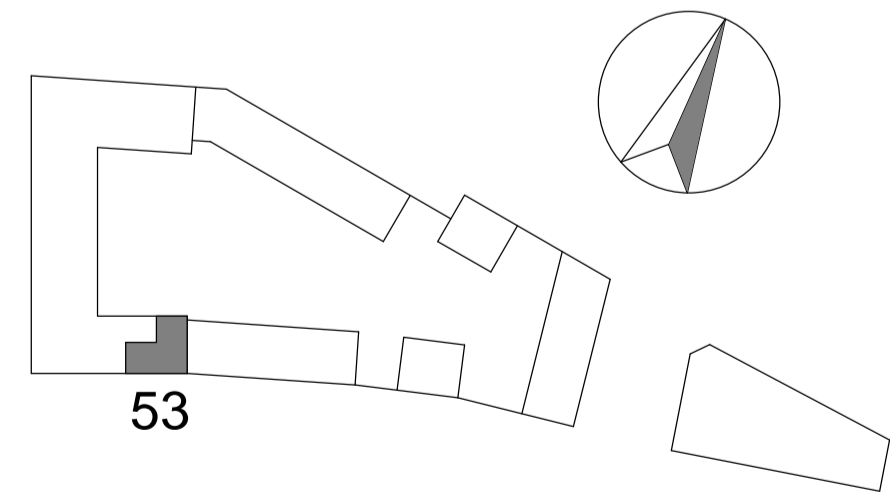


1 : 200  
ACHTERGEVEL (NOORD)



1 : 50  
PLATTEGROND

Renaud (Slechte bestelde Woningen)	
	toilet
	wastafel
	douche met vloergoot
	warmteterugwinunit
	warmtepomp
	optioneel extra boilervat
	wasmachine aansluiting
	wasdroger aansluiting
	elektrische handdoekradiator
	verdeeler vloerverwarming
	vloerverwarming
	ventilatieventiel (in plafond)
	schacht
	entree woning
	deur, brandwerend en zelfsluitend
	deur
	draaikiepraam
	tegelwerk
	geknijpstreepte oppervlakte



53

DERDE VERDIEPING

SPUIFRONT  
OUD-BEIJERLAND



bouwnummer 53 onderdeel  
22-06-2021 datum  
As indicated: schaal  
4055 projectnummer