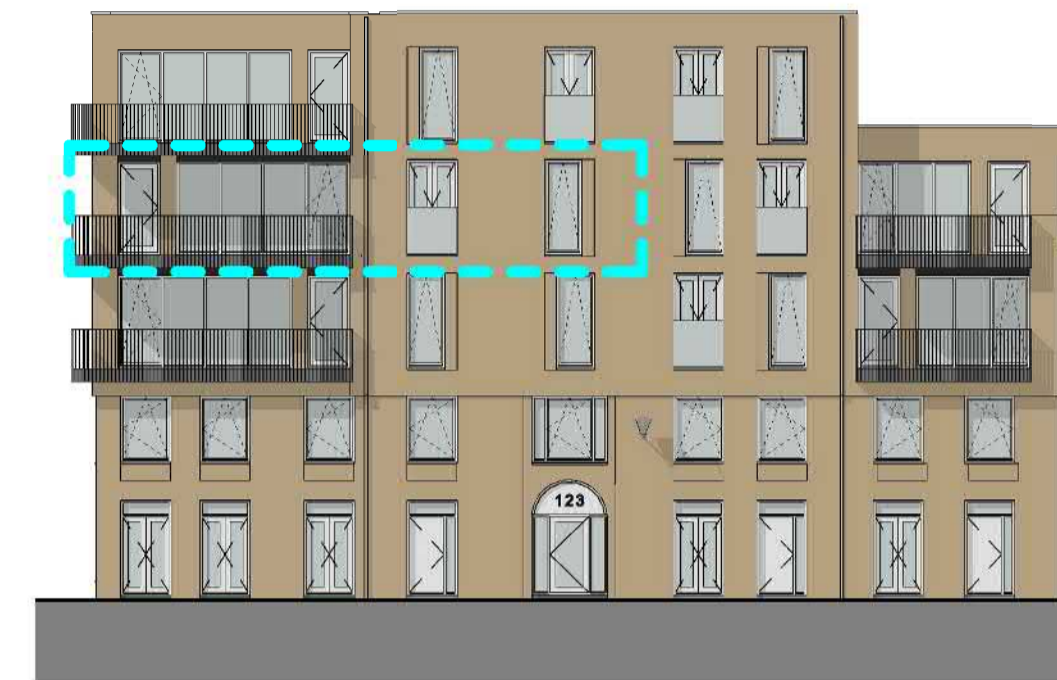


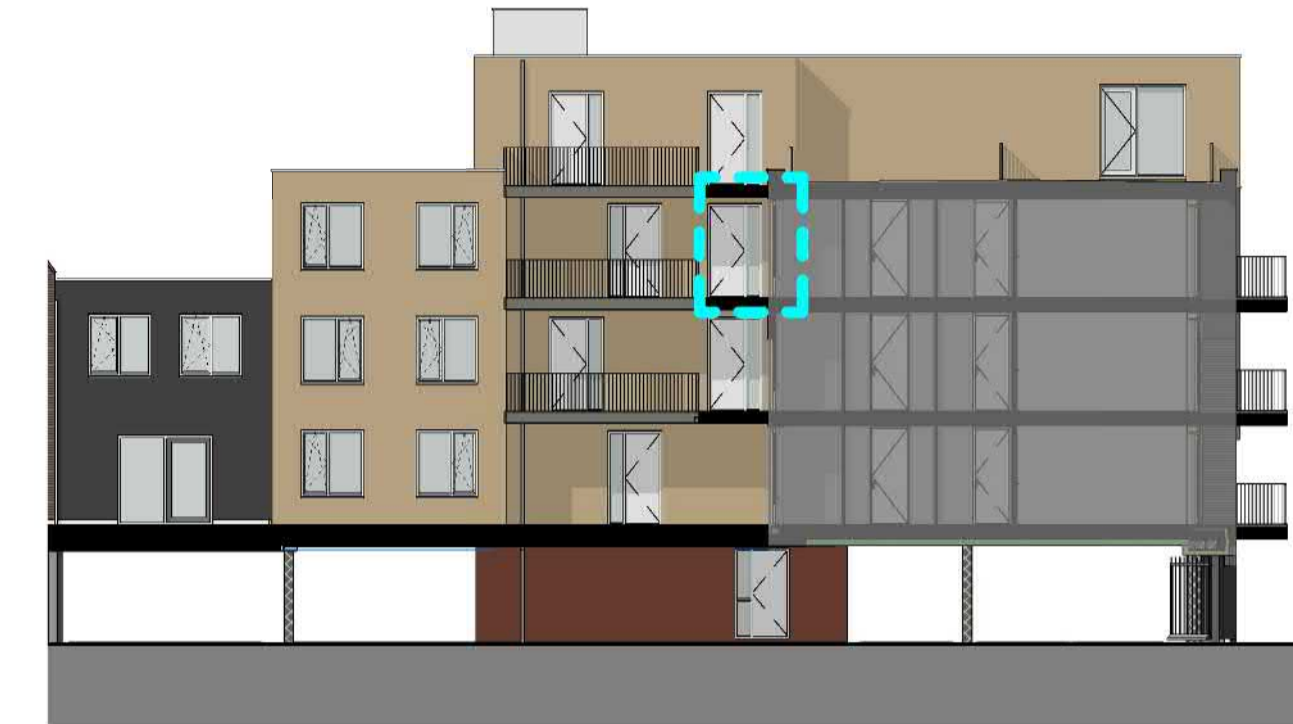
-  toilet (gestippeld optioneel)
-  wastafel
-  douche met vloergoot
-  wtw warmteterugwinunit
-  wp warmtepomp
-  wm optioneel extra boilervat
-  wma wasmachine aansluiting
-  wda wasdroger aansluiting
-  rad elektrische handdoekradiator
-  vv verdeler vloerverwarming
-  vloerverwarming
-  ventilatieventiel (in plafond)
-  schacht
-  entree woning
-  deur, brandwerend en zelfsluitend
-  deur
-  draaikiepraam
-  tegelwerk
-  gekrijstreepte oppervlakte



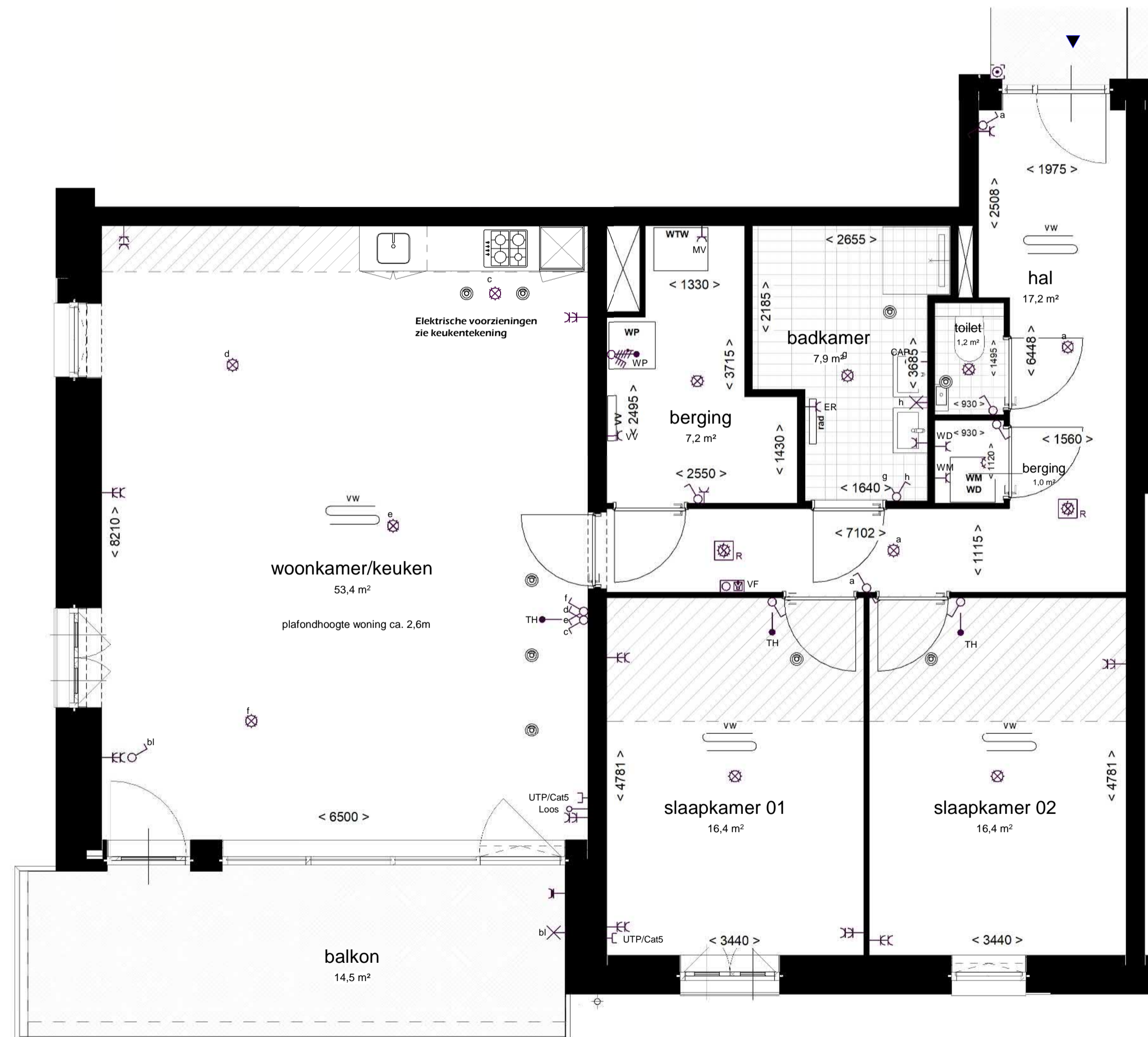
ZIJGEVEL (WEST)





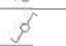
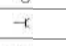
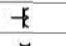
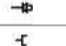

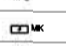



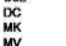





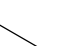

VOORGEVEL (ZUID)

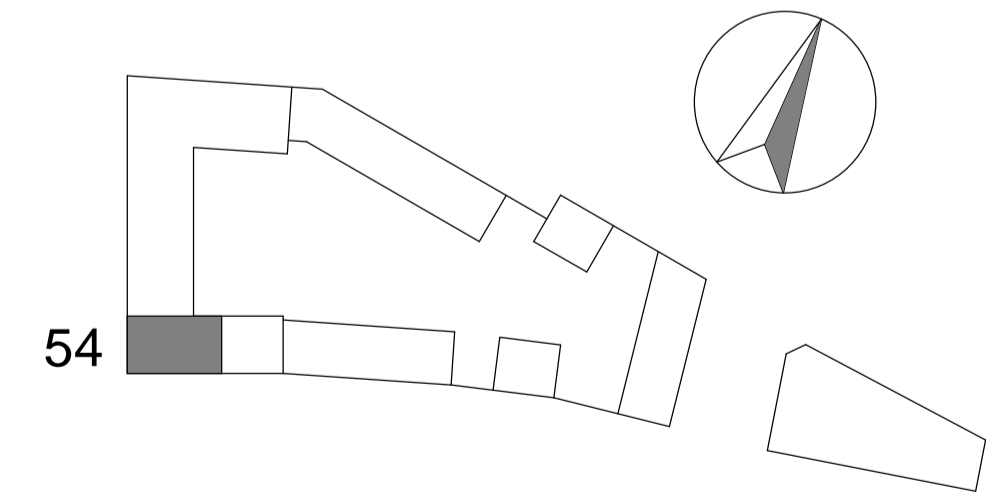


ACHTERGEVEL (NOORD)



PLATTEGROND

Renaal (Elektrische bestelde) Woningen	
	toilet
	wastafel
	douche met vloergoot
	warmteterugwinunit
	warmtepomp
	optioneel extra boilervat
	wasmachine aansluiting
	wasdroger aansluiting
	elektrische handdoekradiator
	verdeler vloerverwarming
	vloerverwarming
	ventilatieventiel (in plafond)
	schacht
	entree woning
	deur, brandwerend en zelfsluitend
	deur
	draaikiepraam
	tegelwerk
	gekrijstreepte oppervlakte



54

DERDE VERDIEPING

SPUIFRONT  
OUD-BEIJERLAND



bouwnummer 54, onderdeel  
22-06-2021, datum  
1:50, schaal  
4055, projectnummer