



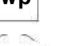
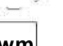


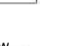










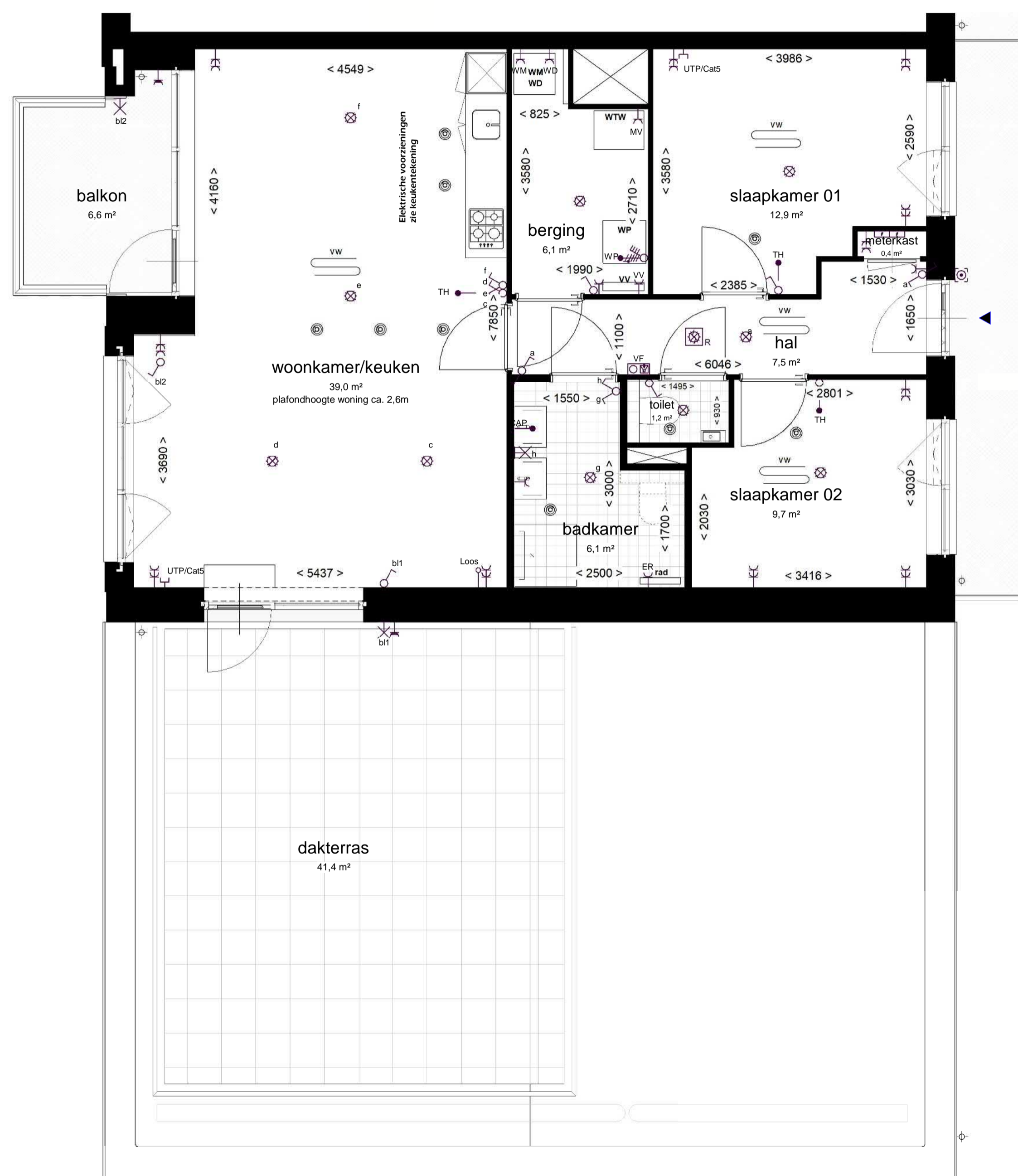


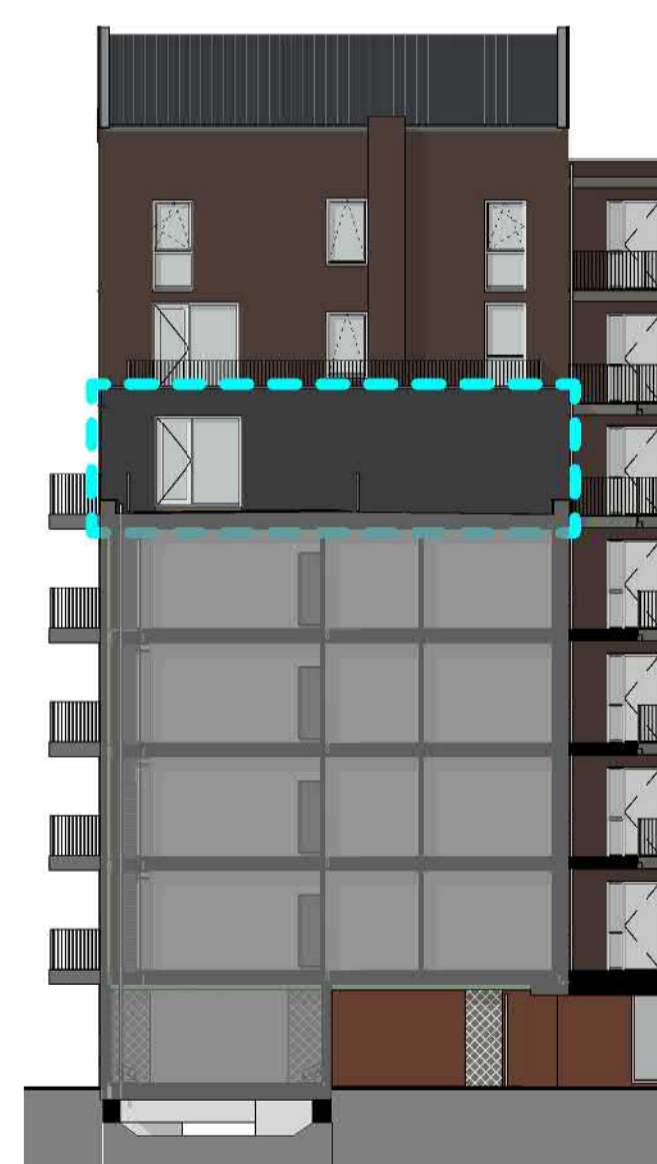
-  toilet (gestippeld optioneel)
-  wastafel
-  douche met vloergoot
-  wtw warmterugwinunit
-  wp warmtepomp
-  optioneel extra boiler vat
-  wmi wasmachine aansluiting
-  wd wasdroger aansluiting
-  rad elektrische handdoekradiator
-  vw verdeiler vloerverwarming
-  vloerverwarming
-  ventilatieventiel (in plafond)
-  schacht
-  entree woning
-  deur, brandwerend en zelfsluitend
-  deur
-  draaikiepraam
-  tegelwerk
-  geknijpstreepte oppervlakte



1:50 PLATTEGROND



1:200 VOORGEVEL (WEST)



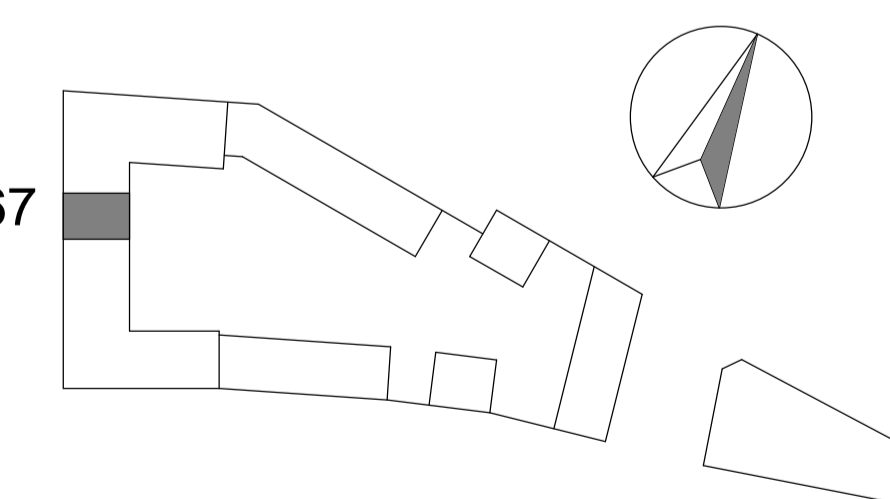
1:200 ZIJGEVEL (ZUID)



1:200 ACHTERGEVEL (OOST)

Rennovatie bestaande Woningen	
	toilet
	wastafel
	douche met vloergoot
	wtw warmterugwinunit
	wp warmtepomp
	optioneel extra boiler vat
	wmi wasmachine aansluiting
	wd wasdroger aansluiting
	rad elektrische handdoekradiator
	vw verdeiler vloerverwarming
	vloerverwarming
	ventilatieventiel (in plafond)
	schacht
	entree woning
	deur, brandwerend en zelfsluitend
	deur
	draaikiepraam
	tegelwerk
	geknijpstreepte oppervlakte

67



VIJFDE VERDIEPING

SPUIFRONT
OUD-BEIJERLAND